



Keele

UNIVERSITY

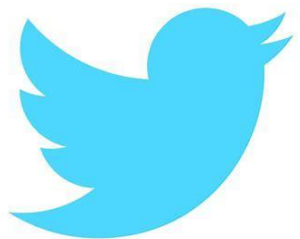
EST 1949

Utilising technology to support the delivery of **clinical skills** and **simulation**

Sebastian Meighan-Davies

Clinical Practice Teaching Fellow

s.j.meighan-davies@keele.ac.uk



@Simu_seb



My Background:

Children's Nurse

Children's Emergency Centre, Neonatal Intensive Care & Research Nursing

Clinical Practice Teaching Fellow @ Keele University
18 Months

Developing Simulated Placement Learning Opportunities

Working towards masters – Foundations in Neonatal Intensive Care & Independent Professional Practice Development



Session Aim:



Discuss key drivers behind utilising technology to support the delivery of clinical skills and simulation activities.



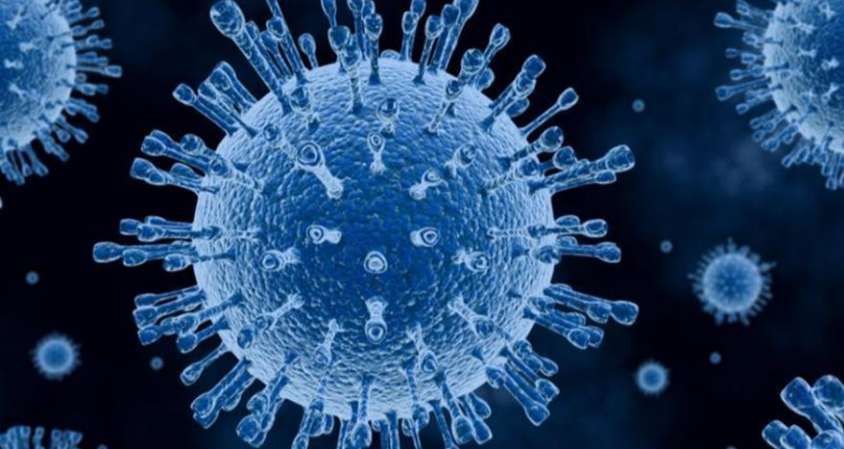
Sharing key learning points from technology and innovation.



Share student comments and feedback.



Top-Tips for using technology to support clinical skills and simulated activities.



The Topol Review

Preparing the healthcare workforce to deliver the digital future

An independent report on behalf of the
Secretary of State for Health and Social Care
February 2019



Midwifery
Council

Realising professionalism:
Standards for education and training

Part 3: Standards for pre-registration nursing programmes

Published 17 May 2018 Updated January 2023

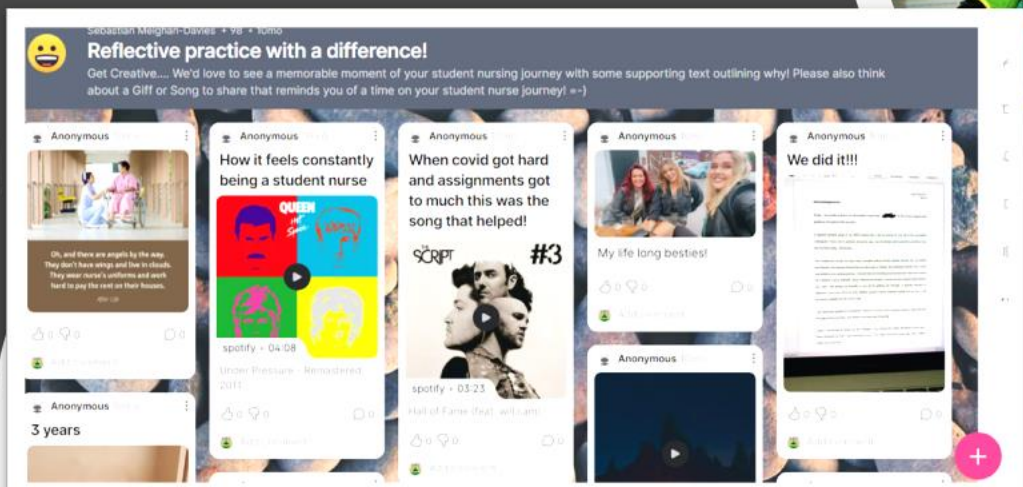
Updates to this document are highlighted in blue.

Why utilise technology when delivering clinical-skills and simulation?

- Impact of Covid-19 Global Pandemic
- The Topol Review (2019) - New medicine will require extensive education and training with a cross-disciplinary approach.
- Part 3 Standards for pre-registration nursing programs - NMC (2023) – Ensure technology enhanced and simulation-based learning are used effectively to support learning and assessment.
- Safe Learning Environment
- Appeals and Accessible to broad range of students.
- Immersive, interactive and engaging experiences across all 4 fields of nursing – Parity of learning experience.



Teaching with Technology @ Keele





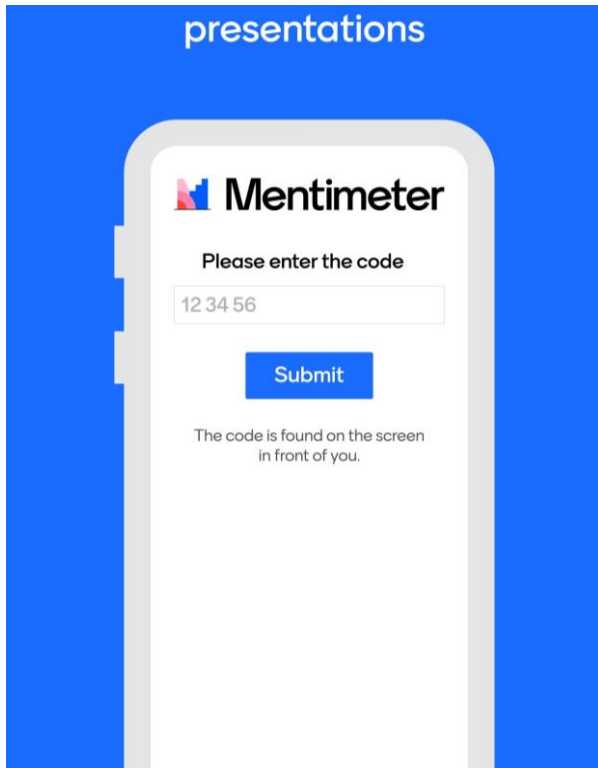
Support Infrastructure

- 6 Clinical Practice Teaching Fellows
- Large student numbers
- Wifi (home or onsite?)
- Timetabling/planning
- Technology/Training For Students
- Group sizes for maximising learning



Live From the
CEC





“Navigate The Nurse”

- Interactive
- Stress Inoculation for student
- Can be streamed to large groups
- Resource intensive
- Have a back-up plan!



Blended Approach





Blended Approach

- Helps ease logistical challenges.
- Brings the technology to life.
- Ability to reflect and replay.
- Feedback linked directly to the evidence base.

Manikins use in Simulation and Clinical Skills

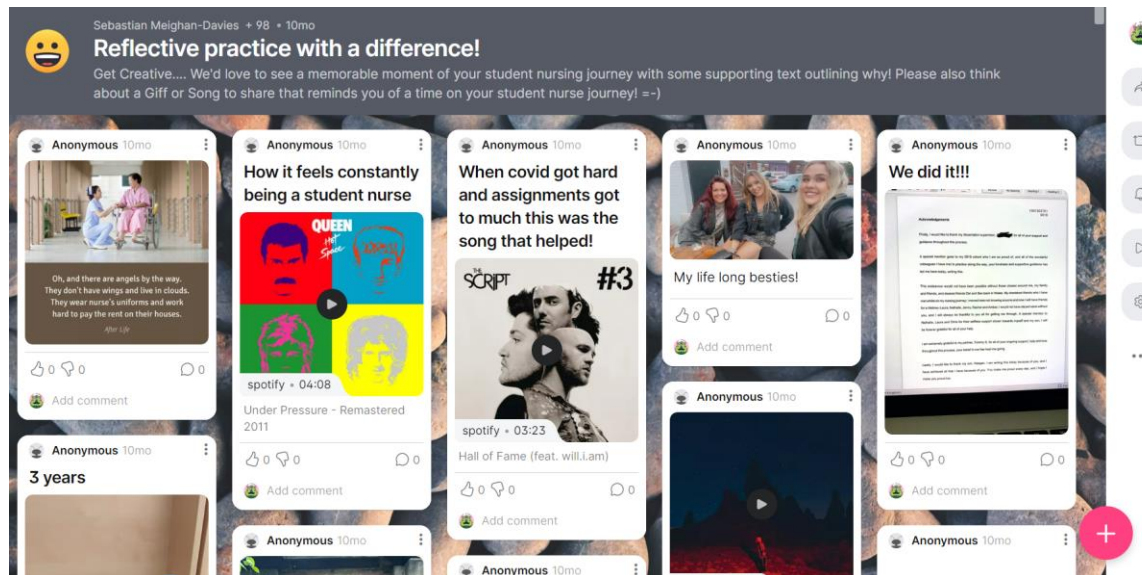
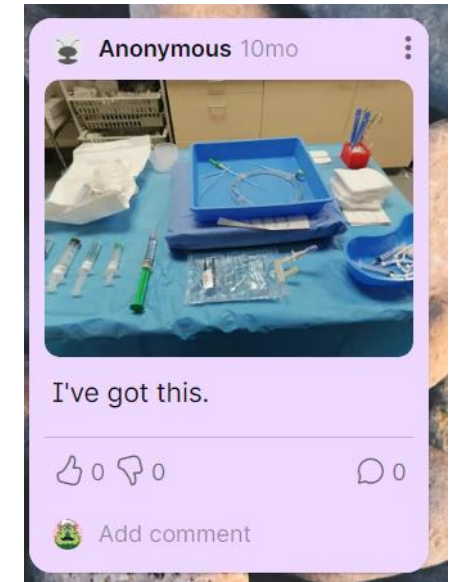
- High fidelity - (varying fidelities indicated by NMC 2022).
- Supports blended learning approach
- Transportation
- Can be utilised for in person sessions and for live streaming
- Visual observations available for monitoring
- Student resilience (prep for practice)



Technology in our Simulation Health Houses/Control Room & Debrief Facilities

- **AXIS Camera Station**
- **Video Debrief Capabilities**
- **Student Feedback – transitioned**
- **Resource intensive – experimentation is ongoing.**
- **Future proofing Grade II listed building – English Heritage**





Use of technology to
support independent
study

Student Feedback:



- “Gained more knowledge through this simulation and now have the confidence to challenge poor practice”
- “Brilliant learning opportunity, was lovely to come together as a cohort! My confidence has definitely benefited from this week.”
- Students were critical of what they perceived as down time.
- Students wanted more traditional simulation – logistically difficult at times.
- “Would love to have had more simulated Placement opportunities”

What have we learned?





Technology if used correctly can enhance student learning experience and provide a safe space for learning (all fields).



Technology can help ease the logistical challenges of planning large scale simulation and skills events.

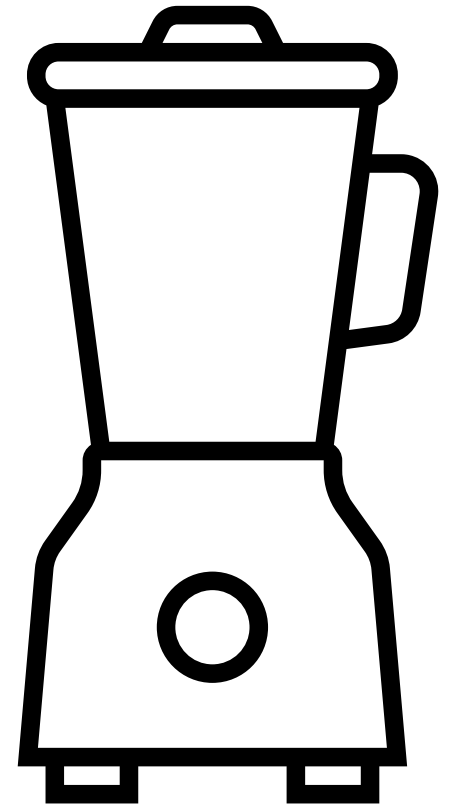
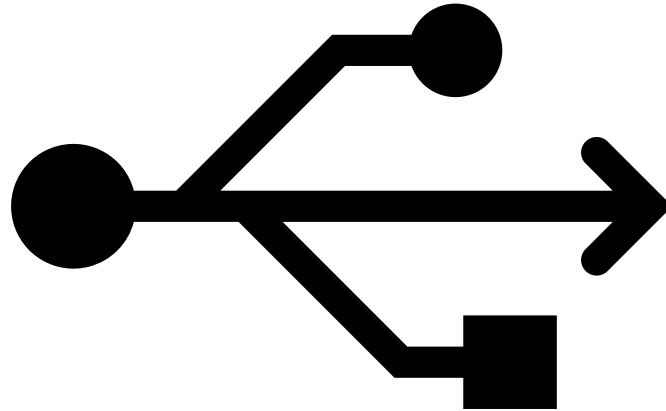
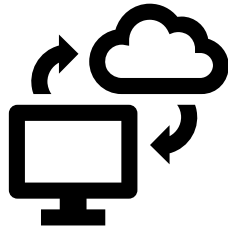
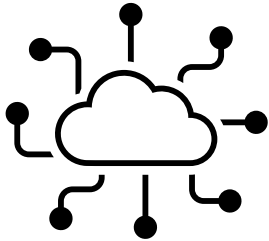


**Technology helps to provide innovative approaches to learning and assessment.
Students must be immersed in technology to prepare them for the future digital NHS.**



Always have a back up plan!

Blended Learning Approach



Don't forget your blender!

Any Questions?

