



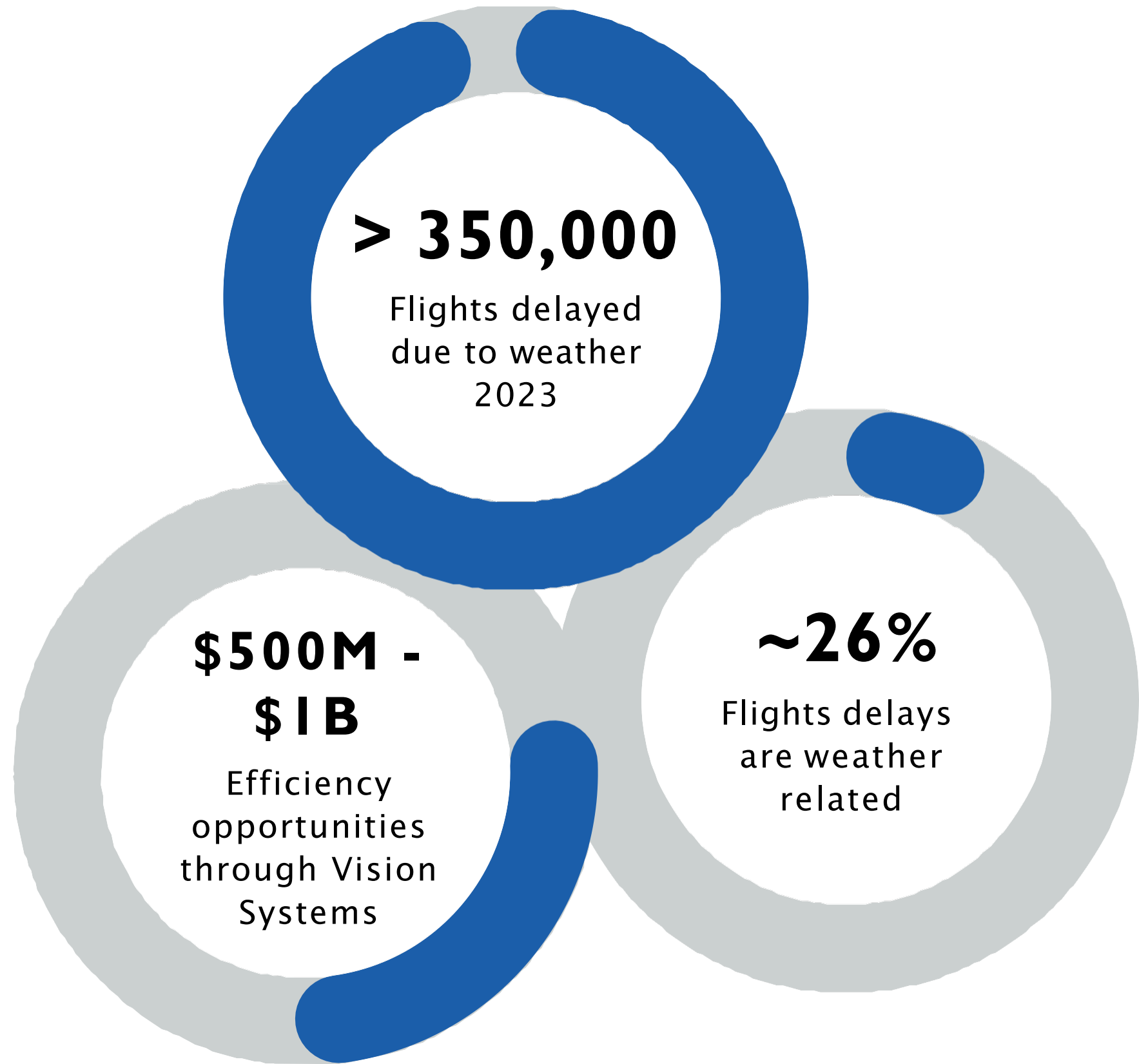
# AerAware<sup>TM</sup>

COMPLETE ENHANCED FLIGHT VISION SYSTEM



*Unparalleled Visibility.  
Unprecedented Safety.*





.....

## EFFECTS OF WEATHER-RELATED DISRUPTIONS

Many of these delays could have been “saved” by AerAware

AerAware is the complete Enhanced Flight Vision System solution that enables commercial aircraft pilots to “see” through low visibility conditions in all phases of flight



# SKYLENS HEAD WEARABLE DISPLAY

The SkyLens offers a vast, immersive display that projects a complete view of the aircraft's primary systems data alongside 3D Synthetic Vision

✓ Dual Pilot System

✓ Improved Crew Management

Lightweight and comfortable

Allows for preferred pilot seating location

Wearable over glasses and headphones





# EVS 5000 CAMERA

Combines visible light and longwave infrared sensors to display a comprehensive view outside the cockpit

Pilots can see through rain, fog, snow and other low-visibility conditions

High resolution camera

4 cameras, 6 internal sensors

Detects LED Runway and Approach Light System Lights



# COMBINED VISION SYSTEM (CVS)

$$SVS + EVS = CVS$$



## — Synthetic Vision (SVS)

- Provides computer generated 3D images of terrain
- Utilizes a worldwide airport database & GPS technology
- Extended centerline symbology
- Display alternative suitable airports

## — Enhanced Vision (EVS)

- Merges input of high-definition visual cameras, and both near and far infrared sensors into one perfectly fused image
- Detects incandescent and LED runway lights

# SYSTEM BENEFITS



## Enhanced Safety

Reduces the risk of ground incidents

- Runway incursions
- Runway excursions
- Taxi incidents

Better energy management

- Hard landings
- Tail strikes



## Improved Operations

Provides dispatch and landing approach priority

- Reduced delays
- Limits hold time



## Cost Savings

Minimizes the potential of delays or diversions therefore reducing

- Alternate transportation
- Hotel arrangements
- Crew expenses
- Luggage expenses
- Reduced fuel burn



## Minimal downtime

The streamlined installation process ensures minimal downtime, typically requiring just three to five days per aircraft



## Environmental Advantage

Enhances route efficiency during adverse weather

- Lower fuel consumption
- Reduced carbon emissions

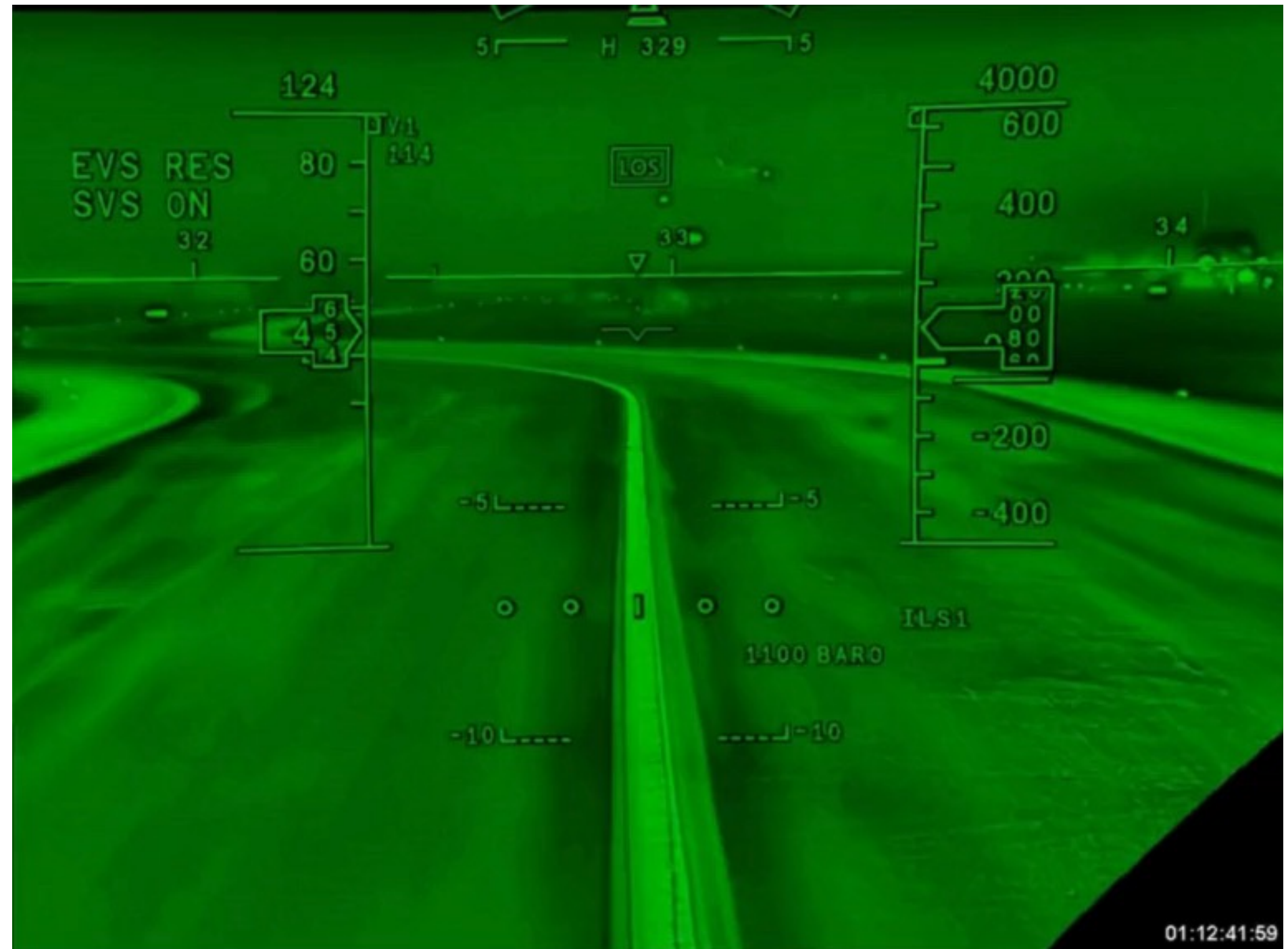
# SAFETY BENEFITS

Complete situational awareness under all circumstances and all phases of flight

Enhanced Vision during taxi operations provides pilots with early / enhanced vision of ground operations

Reducing the risk of:

- Tail strikes
- Hard landings
- Runway incursions
- Runway excursions



# 50% VISUAL ADVANTAGE

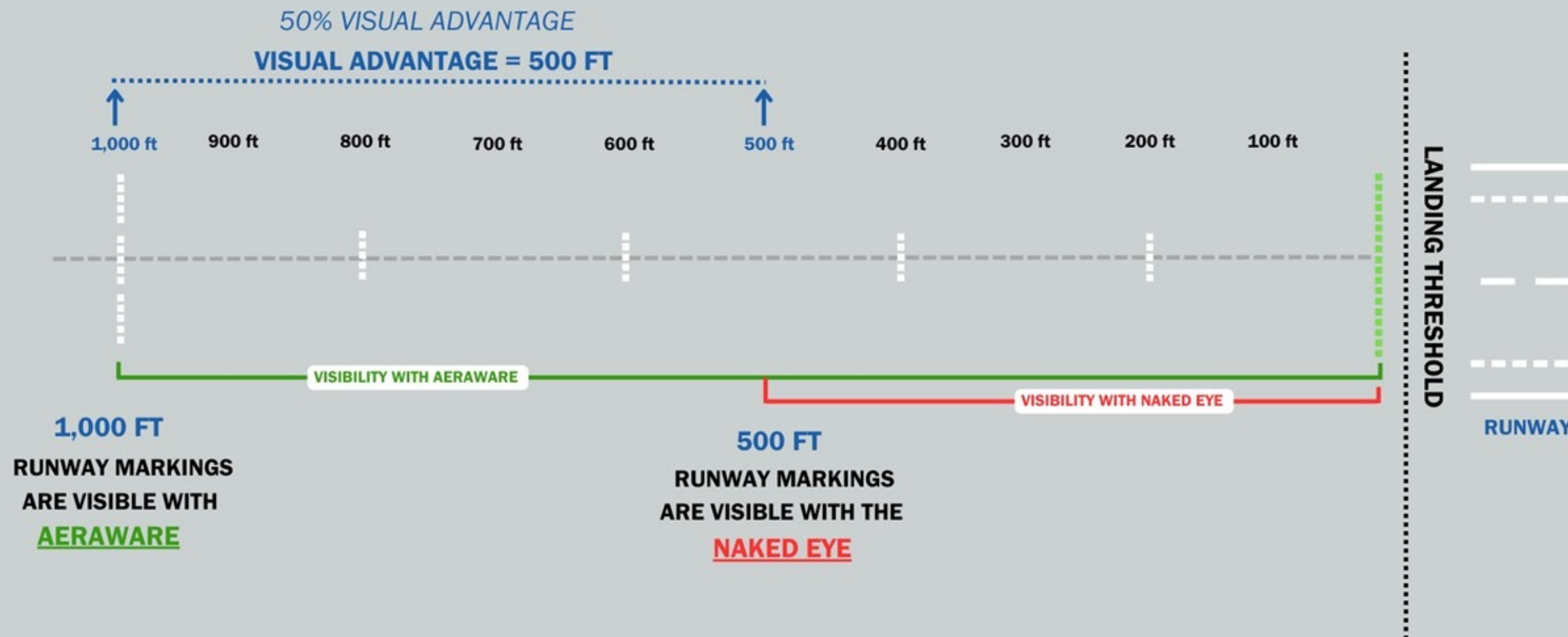
**Visual advantage = the difference in visibility with the naked eye versus with AerAware Enhanced Vision**

First and only system to allow for a 50% reduction in published required visibility

## Advantage Example:

Consider a CAT I ILS approach with a Published Minimum Visibility Value of 2400 RVR

A flight can be dispatched if the reported visibility is at or above the EFVS Minimum Visibility of 1200 RVR





# REAL WORLD EXAMPLE OF HOW AERAWARE CAN “SAVE”

## Fort Lauderdale - 11/22/22

1/4SM R10L/1400V2200FT FG

Actual Arrival at KFL 09:27 AM

Result 2H17M weather delay w/ diversion

AerAware reduces required RVR for approach to 1200ft.  
Would have allowed for the safe touch down, rollout,  
and taxi to gate

Save the cost of a diversion and accordion effect of  
aircraft delay throughout the system

Estimated Direct Cost of Diversion (FAA report to  
Congress April 2022)

- ◆ \$35,000 Per Flight Diversion
- ◆ \$147-\$178 per minute of delay



# INSTALLATION & CURRENT STATE OF PROGRAM



## Certification

**FAA Certification received on December 6th, 2023 (STC04576AT)**

STC for B737 NG series (additional airframes to follow)

Highest number of flight test hours for any EFVS certification program

EASA certification in process



## Installation

Installed at any MRO within three to five days

Can be arranged to coincide with scheduled aircraft maintenance



## State of the Program

MEL approval

AerAware is certified as a single and a dual pilot system

# Thank you

For more information, visit [www.aersale.com/aeraware](http://www.aersale.com/aeraware)



Come see us at booth #616!