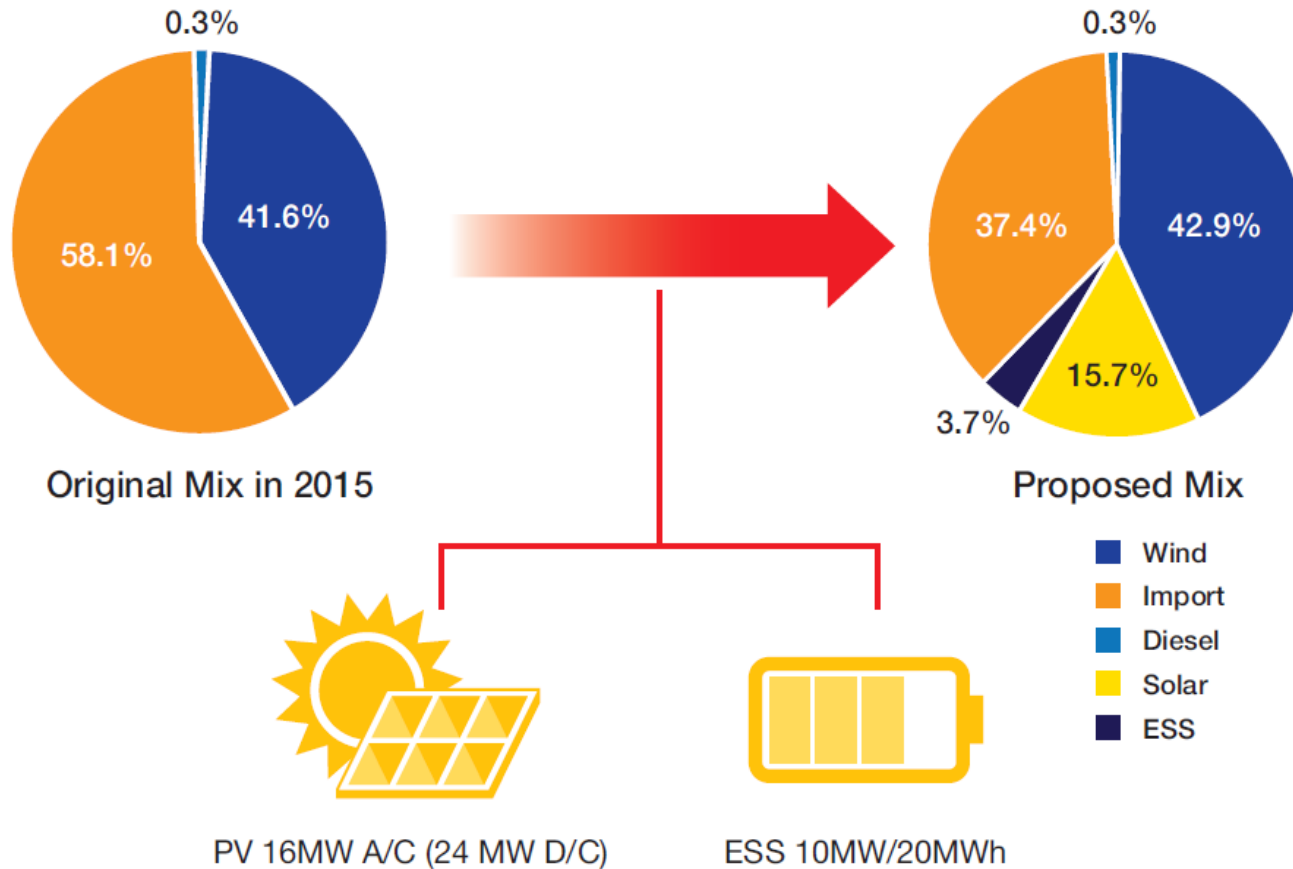


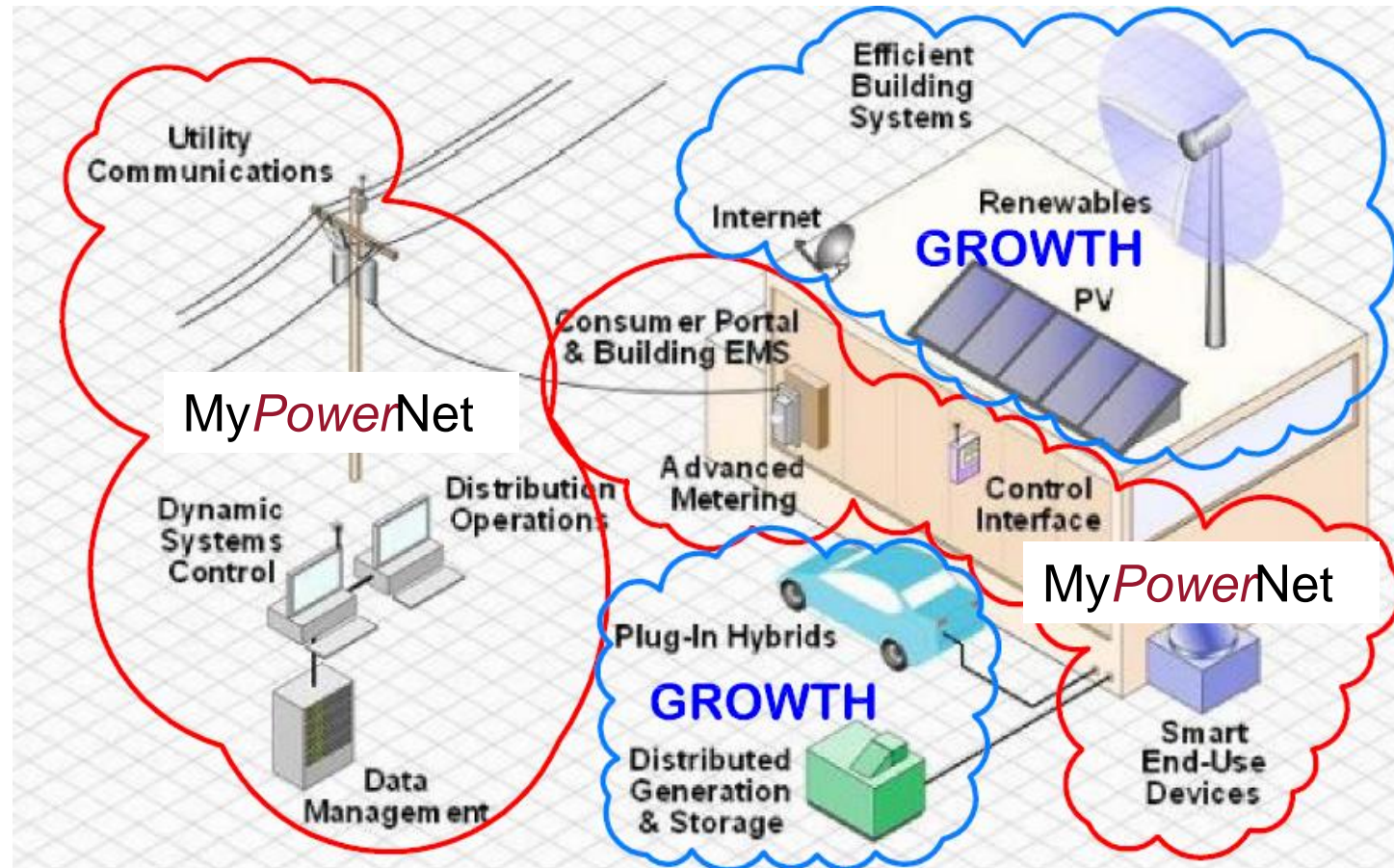
Summerside Renewable Integration



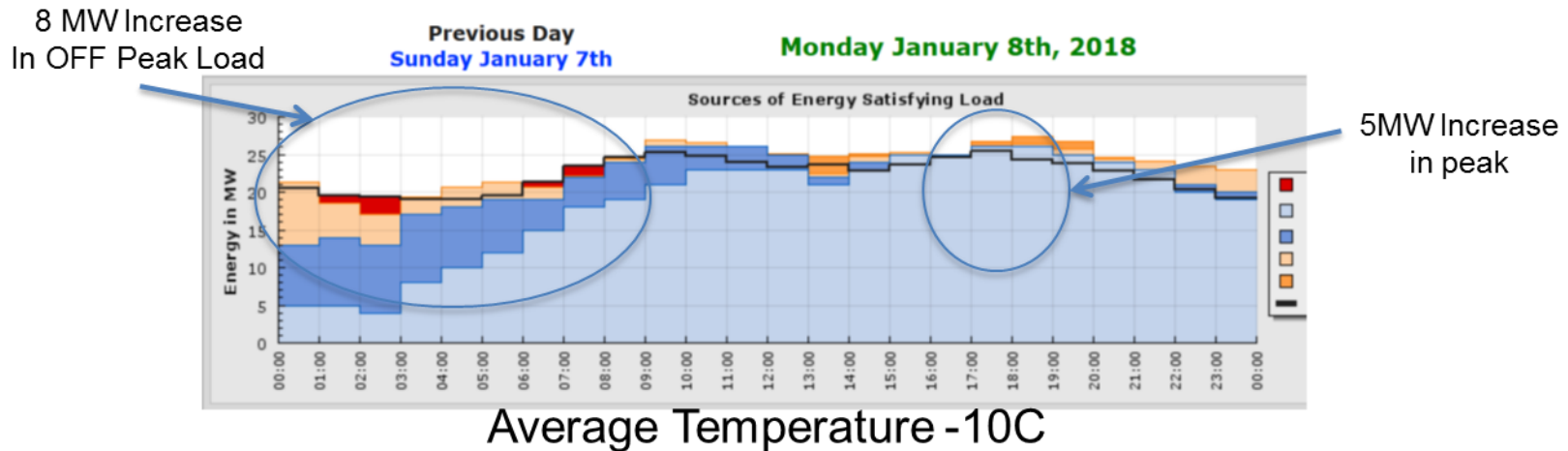
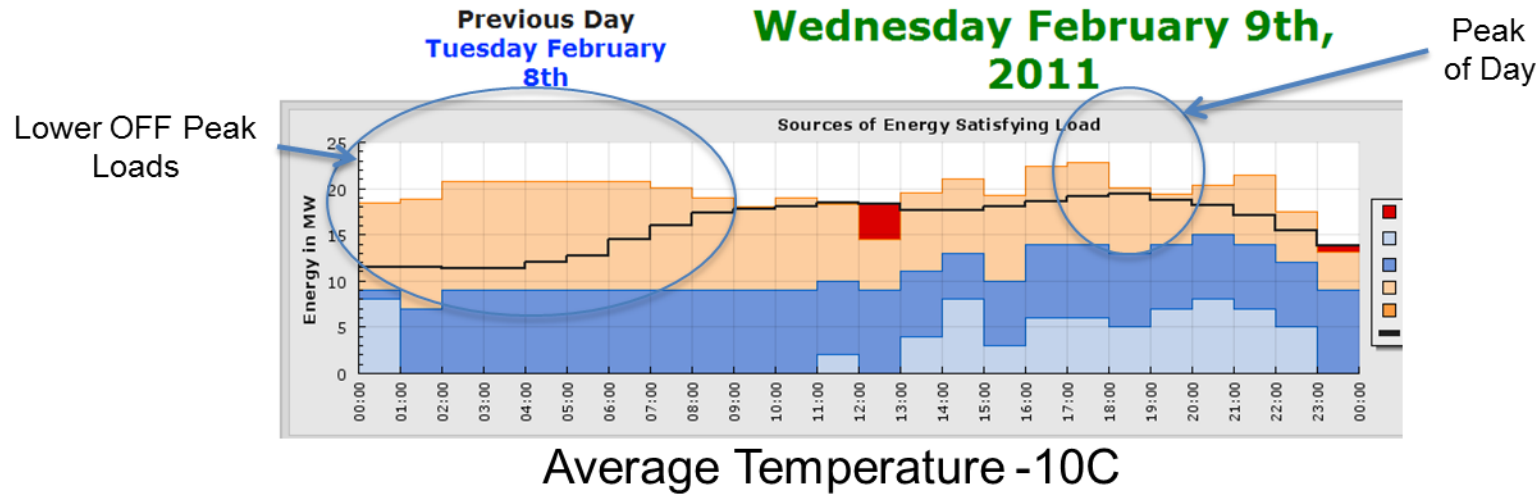
Summerside in 2022 will have over 60% Renewable Integration



MyPowerNet Components



Load Control – Matches Integration

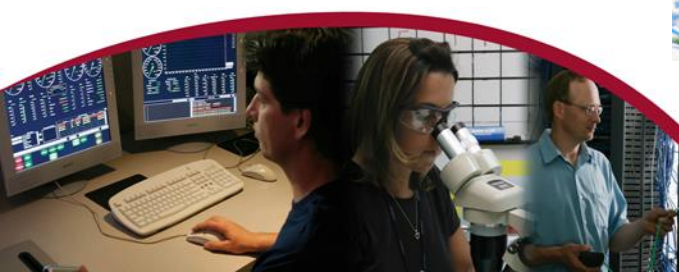
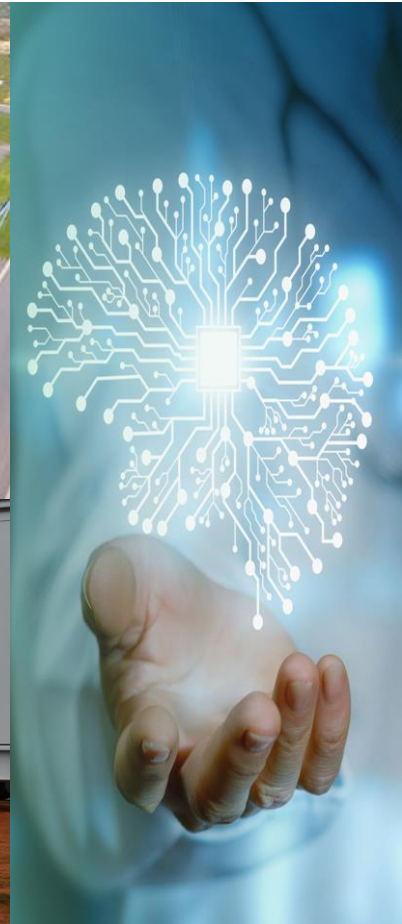


City of
Summerside

Prince Edward Island, Canada



Projects Completed



City of
Summerside
Prince Edward Island, Canada

Why Integrate Renewables

Energy Pricing Stability levels

Capacity Values of Assets

Ancillary Services Values - Automation Generation Control, Load Following (Gen. and Customer), Spinning & Supplemental Reserves

Storage/Demand Response + Renewables = Ancillary Service Values

Energy Shifting to Electricity from other sources

Consumers are changing to Prosumers – Utility revenue model is changing

Look at the full System – Not one Area



What's Next



Small City. Big Innovation



Greg Gaudet, P.Eng., Director Municipal Services
(902)439-5776, ggaudet@city.summerside.pe.ca

City of
Summerside
Prince Edward Island, Canada

