

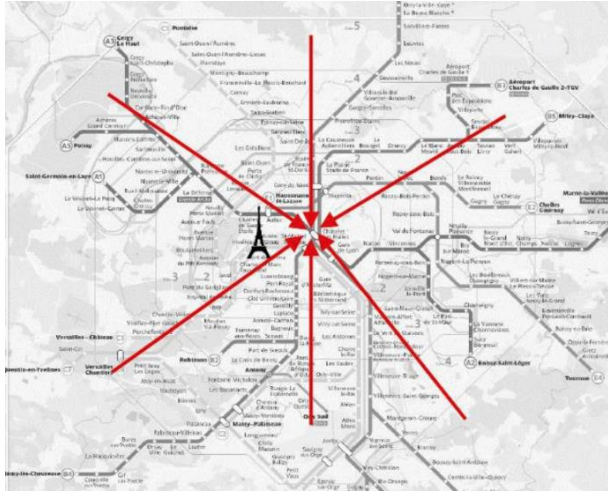


GRAND PARIS NEW METRO THROUGH THE LINE 15 SOUTH - PACKAGE « T3C »

DECEMBER 15TH, 2020

THE LARGEST EUROPEAN INFRASTRUCTURE PROJECT

GENESIS



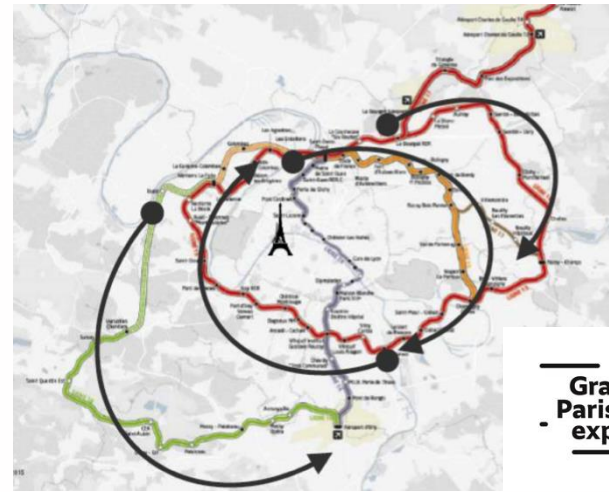
2010

Société du Grand Paris
is founded



2011

Agreement on the final
layout by Decree



2016

Start of the civil
works



2024-2030

Commissioning

**Integrated Mass-transit system, with interconnections
and alternative routes in case of traffic disruption**

Grand Paris Express, the largest transport project in Europe

200KM
of new metro lines

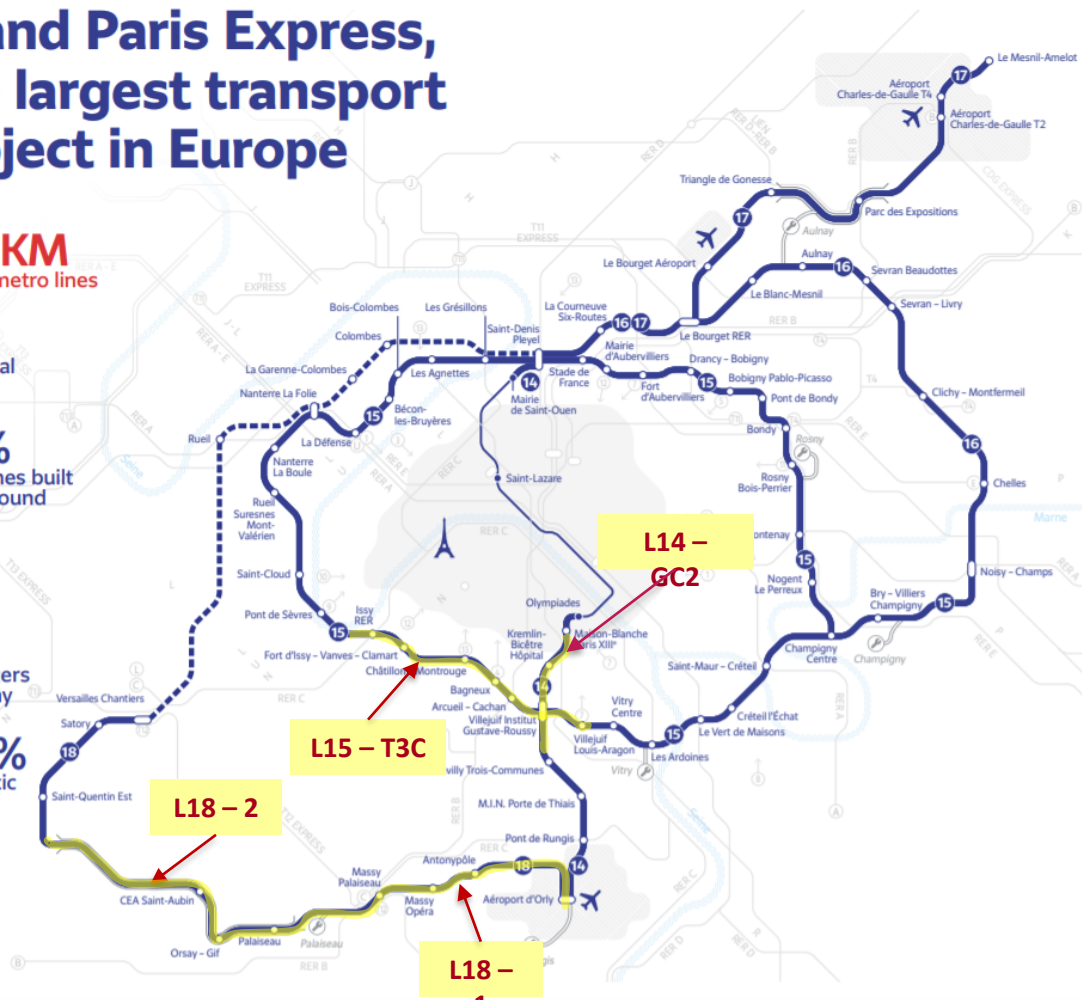
4
additional lines

90%
of the lines built underground

68
stations

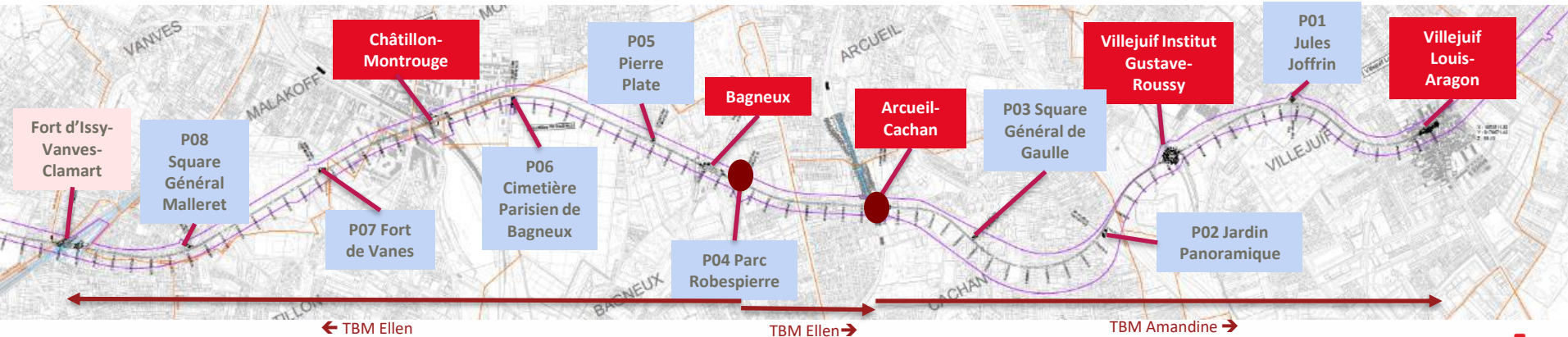
2M
passengers every day

100%
automatic



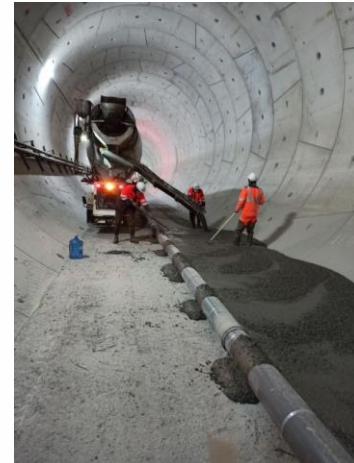
LINE 15 SOUTH – PACKAGE « T3C »

- Journey from Fort d'Issy Vanves-Clamart to Villejuif Louis-Aragon
- Construction Contract value: €926mn
- 70 months
- 8 km of bored tunnel (\varnothing_{int} 8,7 m) / 2 TBMs
- **5 stations et 8 auxiliary shafts**
- 1,000 employees and management



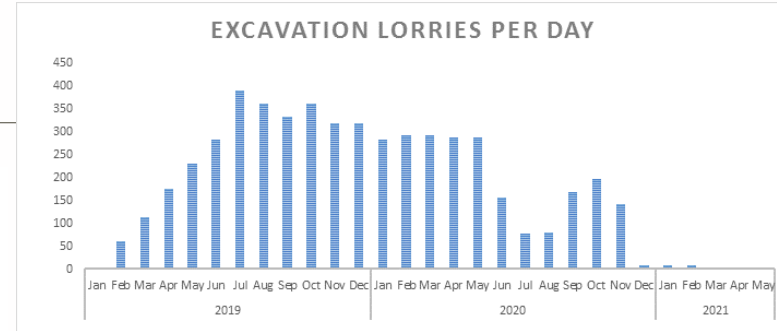
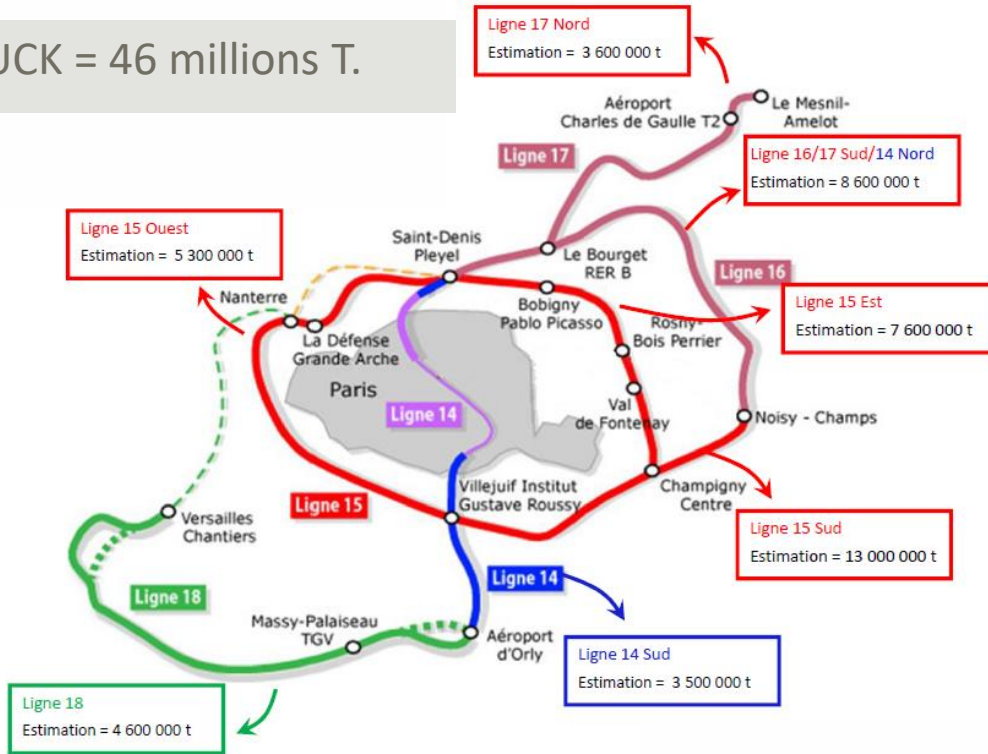
UPDATE ON PROGRESS : « RIGHT ON TRACK! »

- General progress : 85%
- 4 out of 7 auxiliary shafts handed-over to Client
- 2 TBM drives completed (7.4km), central link still to come (0.6km)
- Filling concrete inside tunnel below tracks : 30% progress
- Stations : 80% done on slabs, starting secondary structures
- 350.000h of occupational integration



CHALLENGE #1: FLOW OF TRUCKS

MUCK = 46 millions T.



- Setting-up robust logistic schemes to reduce nuisances for neighbourhoods, like secondary base near Orly Airport
- Mitigation measures

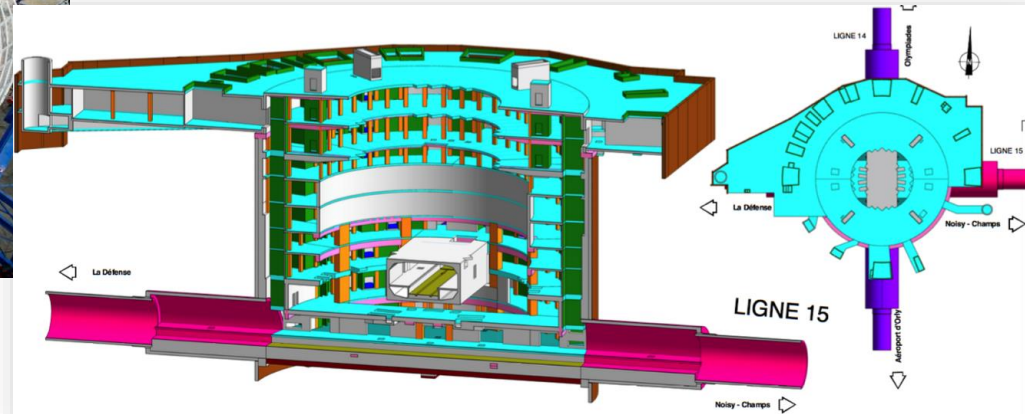


INNOVATION #1: « INSTITUT GUSTAVE ROUSSY » STATION



“THE” Landmark Station of Line 15 South

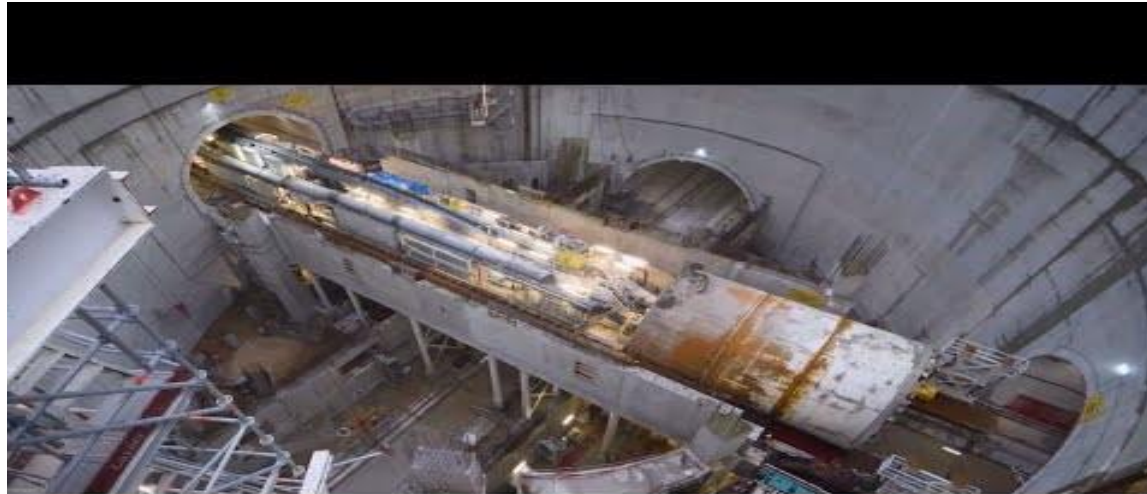
- 60m diameter shaft with internal concrete lining
- 4 x 34m long and 120 sqm NATM's galleries to accommodate train platforms



INNOVATION #1: « INSTITUT GUSTAVE ROUSSY » STATION'S BRIDGE

Temporary bridge replaced by jacked-up definitive structure

SAFETY / PLANNING / COST EFFECTIVENESS

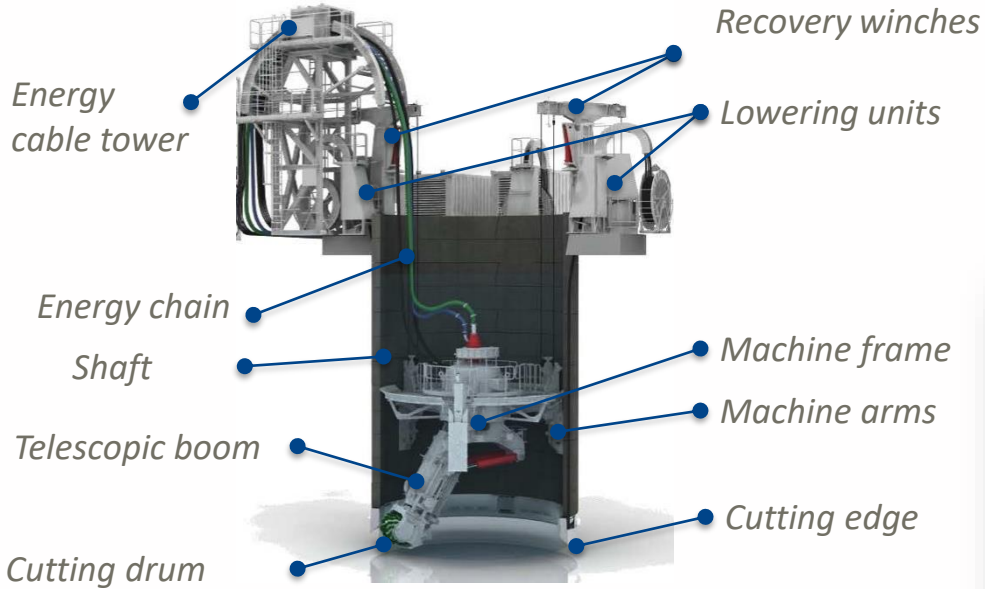


Jan. 20
transfert of
L14's TBM through
the concrete bridge

Jul. 20
3200 T
concrete bridge
jacked-up

Pour permettre le passage du tunnelier,
un pont cadre a été réalisé au préalable.

INNOVATION #2: VERTICAL SHAFT SINKING MACHINE (VSM)



1st VSM in France :

SAFETY / ENVIRONMENTAL FRIENDLY / QUALITY

2020 CONTEXT: COVID-19 CRISIS MANAGEMENT



**Closure : 16th March 2020 Resuming
: 20th April 2020 – 1st TBM
restarting within Grand Paris**

**Setting-up on site and at Corporate
Level, with Authorities**

**of new sanitary
procedures to ensure
Health protection of
all our employees**

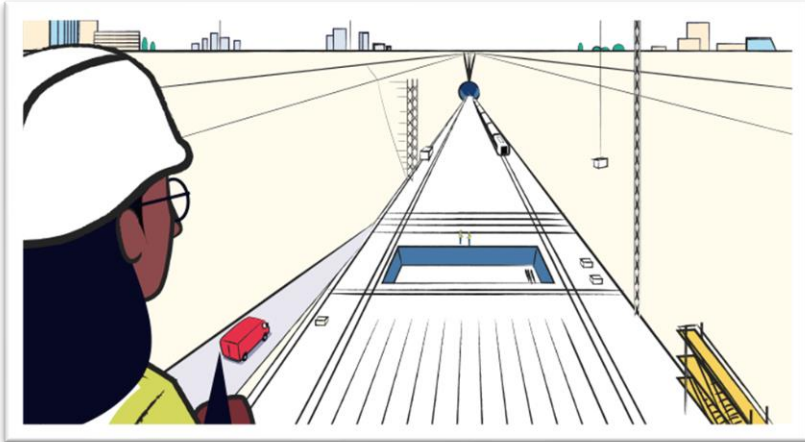


2021 AND BEYOND : 18-1 & 18-2 CONTRACTS

2 main Civil Works Contracts awarded in 2020 by Société du Grand Paris :

→ 2 new contracts for Vinci Construction in 2020

Package 18-1 800M€ (tunnel)



Package 18-2 300M€ (viaduct)



Confidence of our Client in our capacity of delivering high quality product, safely, with low environmental impact, developing innovation, on schedule and within budget



GRAND PARIS NEW METRO THROUGH THE LINE 15 SOUTH T3C

DECEMBER 15TH, 2020

THANKS