

MBZUAI is an open invitation from Abu Dhabi  
to the world to unleash the full potential of AI  
**His Excellency Dr. Sultan Ahmed Al Jaber**

**For general inquiries:**  
[info@mbzuai.ac.ae](mailto:info@mbzuai.ac.ae)  
**For admission inquiries:**  
[admission@mbzuai.ac.ae](mailto:admission@mbzuai.ac.ae)

**Mohamed bin Zayed**  
**University of Artificial Intelligence**  
Masdar City  
Abu Dhabi  
United Arab Emirates

**Follow us:**  
[@mbzuai](https://www.instagram.com/mbzuai)

February 2020

[mbzuai.ac.ae](http://mbzuai.ac.ae)



**MOHAMED BIN ZAYED**  
**UNIVERSITY OF**  
**ARTIFICIAL INTELLIGENCE**

**A step into the  
future of education**

[mbzuai.ac.ae](http://mbzuai.ac.ae)

## MBZUAI

The **Mohamed bin Zayed University of Artificial Intelligence (MBZUAI)** in Abu Dhabi, is a research-based academic institution that offers graduate degree programs for local and international students in the field of Artificial Intelligence. **MBZUAI** aims to support the advancement of scientific research, development, transfer, and use of Artificial Intelligence through the introduction of MSc and PhD programs that allow students to fulfill their intellectual potential in a state-of-the-art environment.

The goal of **MBZUAI** is to achieve academic and research excellence at the local, regional and international level, helping its students succeed in their career and leverage their acquired knowledge to tackle some of the greatest challenges of our time.

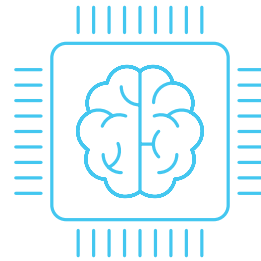
The world's first specialized AI university

Read more:  
[mbzuai.ac.ae](https://mbzuai.ac.ae)

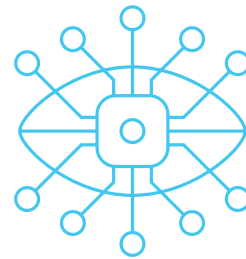
## Our offering

### MBZUAI offers:

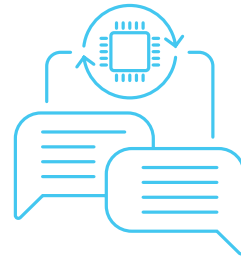
MSc (2 years) and PhD (4 years)  
Programs across 3 main specializations:



**Machine Learning**



**Computer Vision**



**Natural Language Processing**  
(starting from Academic Year 21/22)

## Why choose the MBZUAI

### Our uniqueness, your edge

The first AI-focused research university in the world.

Full scholarship that covers 100% tuition fees and other benefits.

A unique campus with state-of-the-art facilities which boasts a lively student community.

A strong connection between research, study and the professional world.

An international campus environment that promotes a culture of inclusion and development.